



GREAT WHITE[®]

LAB SERIES

CARBIDE BURS

JAZZ[®]

LAB POLISHER



simply better dentistry™

SS WHITE[®]

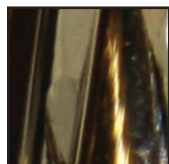


#SSWHITE

Increased Performance and Durability with Zirconium Nitride Coated Lab Cutters

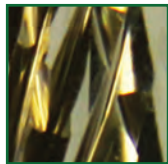
- 10X increased durability and longevity with extremely hard cutting surface of 2,800 Vickers
- Abrasion resistance reduces surface heat and vibration for a cooler, more consistent surface finish
- Comprehensive selection of shapes, sizes and grits, manufactured with tungsten carbide heads and stainless steel shanks

SGE SERIES™ Model Plaster - BULK REDUCTION OF PLASTER WET PLASTER Soft Reline - REMOVAL



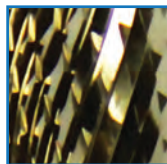
Shank	ISO Shape	200	201
SSW Item Number		GW79-050SGE-4	GW79-070SGE-4
ISO Grit		223	223
Head Dia		050	070
Head Length mm		13	14
Color Band			
Max Speed		30K	20K
Brasseler Number		H79SGE.11.050	H79SGE.11.070
Edenta Number		-	-

GE SERIES™ Model Plaster - BULK MATERIAL REDUCTION OF PLASTER Acrylic - BULK REDUCTION Non-Precious Alloy - BULK REDUCTION



Shank	ISO Shape	143	200	200	200	200	201
SSW Item Number		GW72-060GE-4	GW79-045GE-4	GW79-050GE-4	GW351-060GE-4	GW351-070GE-4	GW79-060GE-4
ISO Grit		220	220	220	220	220	220
Head Dia		060	045	050	060	070	060
Head Length mm		13	13	13	13	13	14
Color Band							
Max Speed		20K	30K	30K	20K	20K	20K
Brasseler Number		-	-	H79GE.11.050	H351GE.11.060	H351GE.11.070	-
Edenta Number		5850.060HP	5650.045HP	-	5250.060HP	6050.070HP	5550.060HP
Dedeco Number		-	-	-	6351GE-060	-	-

E SERIES™ Chrome Cobalt - TRIMMING PARTIAL DENTURE FRAMEWORK Hard Acrylic - TRIMMING DENTURES, TRAYS, TEMPORARY RESTORATIONS Metal Alloy - TRIMMING CROWN AND BRIDGE METAL SUBSTRUCTURES Composite - TRIMMING TEMPORARY APPLIANCE AND RESTORATIONS Plaster & Stone - TRIMMING MODELS & DIES



Shank	ISO Shape	201	237	257	275
SSW Item Number		GW79-070GE-4	GW77-060GE-4	GW78-060GE-4	GW251-060GE-4
ISO Grit		220	220	220	220
Head Dia		070	060	060	060
Head Length mm		14	11	12	14
Color Band					
Max Speed		20K	20K	20K	20K
Brasseler Number		H79GE.11.070	-	5350.060HP	H251GE.11.060
Edenta Number		-	5150.060HP	-	5450.060HP
Dedeco Number		-	-	-	G251GE-060

Shank	ISO Shape	001	001	001	001	001
SSW Item Number		GW71-014E-4	GW71-023E-4	GW71-027E-4	GW71-031E-4	GW71-040E-4
ISO Grit		190	190	190	190	190
Head Dia		014	023	027	031	040
L mm		1.25	2.1	2.5	2.6	3.5
Color Band						
Max Speed		40K	40K	40K	30K	30K
Brasseler Number		H71E.11.014	H71E.11.023	H71E.11.027	H71E.11.031	H71E.11.040
Edenta Number		-	7110.023HP	7110.027HP	7110.031HP	7110.040HP
Dedeco Number		-	6071E-023	6071E-027	-	6071E-040

Shank	ISO Shape	001	001	001	110	123	139	141	143	144	144	187
SSW Item Number		GW71-050E-4	GW71-060E-4	GW71-070E-4	GW296-040E-4	GW364-023E-4	GW129-014E-4	GW141-023E-4	GW72-060E-4	GW364-023RE-4	GW293-023E-4	GW257-023E-4
ISO Grit		190	190	190	190	190	190	190	190	190	190	190
Head Dia		050	060	070	040	023	014	023	060	023	023	023
L mm		4.5	5.5	6.5	6	15	4	8	13	15	15	15
Color Band												
Max Speed		30K	20K	20K	30K	40K	40K	40K	20K	40K	40K	40K
Brasseler Number		H71E.11.050	H71E.11.060	H71E.11.070	H296E.11.040	H364E.11.023	H129E.11.014	H141E.11.023	H72E.11.060	H364RE.10.023	H293E.11.023	-
Edenta Number		7110.050HP	7110.060HP	-	-	0310.023HP	-	-	5810.060HP	0210.023HP	-	0610.023HP
Dedeco Number		6071E-050	-	-	-	-	-	-	6072E-060	-	-	-

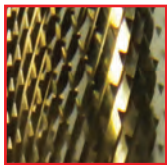
Shank	ISO Shape	198	198	199	199	200	200	200	200	200	201
SSW Item Number		GW138-023E-4	GW351-040E-4	GW261-023E-4	GW79-031E-4	GW79-040E-4	GW79-045E-4	GW79-050E-4	GW351-060E-4	GW351-070E-4	GW257-060E-4
ISO Grit		190	190	190	190	190	190	190	190	190	190
Head Dia		023	040	023	031	040	045	050	060	070	060
Head Length mm		8	8	11.5	11.5	13	13	13	13	13	14
Color Band											
Max Speed		440K	30K	40K	30K	30K	30K	30K	20K	20K	20K
Brasseler Number		H138E.11.023	H351E.11.040	H261E.11.023	-	H79E.11.040	-	H79E.11.050	H351E.11.060	H351E.11.070	H257RE.11.060
Edenta Number		0710.023HP	6210.040HP	0110.023HP	6410.031HP	5710.040HP	5610.045HP	-	5210.060HP	-	5910.060HP
Dedeco Number		-	6351E-040	6261E-023	6079E-031	6079E-040	6079E-045	-	6351E-060	-	6257RE-060

Shank	ISO Shape	201	225	225	225	237	237	237	237	257	257
SSW Item Number		GW79-060E-4	GW137-016E-4	GW137-023E-4	GW137-060E-4	GW77-023E-4	GW77-029E-4	GW77-040E-4	GW77-060E-4	GW78-023E-4	GW78-040E-4
ISO Grit		190	190	190	190	190	190	190	190	190	190
Head Dia		060	016	023	060	023	029	040	060	023	040
Head Length mm		14	4	5.5	8	5.5	5.5	9	11	6	9
Color Band											
Max Speed		20K	40K	40K	20K	40K	40K	30K	20K	40K	30K
Brasseler Number		-	H137E.11.016	-	H137E.11.060	H77E.11.023	H77E.11.029	H77E.11.040	H77E.11.060	H78E.11.023	-
Edenta Number		5510.060HP	0910.023HP	0910.023HP	-	7710.023HP	7710.029HP	-	7010.060HP	-	6110.040HP
Dedeco Number		6079E-060	-	6137E-023	-	-	6077E-029	-	60771E-060	-	6078E-040

Shank	ISO Shape	257	273	275	275	275	277	277	277	289	292
SSW Item Number		GW78-060E-4	GW251-040E-4	GW250-040E-4	GW251-060E-4	GW251-070E-4	GW73-023E-4	GW73-040E-4	GW73-060E-4	GW139-023E-4	GW295-023E-4
ISO Grit		190	190	190	190	190	190	190	190	190	190
Head Dia		060	040	040	060	070	023	040	060	023	023
Head Length mm		12	9	13	14	14	3.8	6	10	8	15
Color Band											
Max Speed		20K	30K	30K	20K	20K	40K	30K	20K	40K	40K
Brasseler Number		H78E.11.060	H251E.11.040	H250E.11.040	H251E.11.060	H251E.11.070	H73E.11.023	H73E.11.040	H73E.11.060	H139E.11.023	H295E.11.023
Edenta Number		5310.060HP	7210.040HP	-	5410.060HP	-	1810.023HP	-	6310.060HP	0810.023HP	0410.023HP
Dedeco Number		-	-	-	6251E-060L	-	-	-	-	-	6295E-023

EF SERIES

Cross Cut



Chrome Cobalt - TRIMMING DENTURE FRAMEWORK

Hard Acrylic - TRIMMING DENTURES, TRAYS, TEMPORARY RESTORATIONS

Metal Alloy - TRIMMING CROWN AND BRIDGE METAL SUBSTRUCTURES

Composite - TRIMMING TEMPORARY APPLIANCE AND RESTORATIONS **Plaster & Stone** - TRIMMING MODELS & DIES

Shank	ISO Shape	141	144	187	187	198	199	199	200	200	200
SSW Item Number		GW129-023EF-4	GW364-023REF-4	GW257-023EF-4	GW257-060EF-4	GW138-023EF-4	GW261-023EF-4	GW79-031EF-4	GW79-040EF-4	GW79-045EF-4	GW351-060EF-4
ISO Grit		140	140	140	140	140	140	140	140	140	140
Head Dia		023	023	023	060	023	023	031	040	045	060
Head Length mm		8	15	15	14	8	11.5	11.5	13	13	13
Color Band											
Max Speed		40K	40K	40K	20K	40K	40K	30K	30K	30K	20K
Brasseler Number		H129EF.11.023	H364R.11.023	H257EF.11.023	H257EF.11.060	H138EF.11.023	H261EF.11.023	-	H79EF.11.040	-	H351EF.11.060
Edenta Number		1720.023HP	0220.023HP	0620.023HP	-	0720.023HP	0120.023HP	6420.031HP	5720.040HP	5620.045HP	5220.060HP
Dedeco Number		-	-	6257EF-023	-	6138EF-023	6261EF-023	6261EF-023	6079EF-040	6079EF-045	6351EF-060



Shank	ISO Shape	201	237	237	257	275	277	289	292
SSW Item Number		GW79-060EF-4	GW77-023EF-4	GW77-029EF-4	GW78-060EF-4	GW251-060EF-4	GW73-023EF-4	GW139-023EF-4	GW295-023EF-4
ISO Grit		140	140	140	140	140	140	140	140
Head Dia		060	023	029	060	060	023	023	023
Head Length mm		14	5.5	5.5	12	14	3.8	8	15
Color Band									
Max Speed		20K	40K	40K	20K	20K	40K	40K	40K
Brasseler Number		-	H77EF.11.023	H77EF.11.029	H78EF.11.060	H251EF.11.060	H73EF.11.023	H139EF.11.023	H295EF.11.023
Edenta Number		5520.060HP	7720.023HP	7720.029HP	5320.060HP	5420.060HP	1820.023HP	0820.023HP	0420.023HP
Decoco Number		6079EF-060	-	-	-	6251EF-060	-	-	6295EF-023

Left Handed
EFL SERIES™
Cross Cut

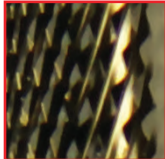
Left Handed
EL SERIES™
Cross Cut

EUF SERIES™ High Noble Alloys - TRIMS WITHOUT FOLDING
Gold Cast Restorations - TRIM AND ADJUST
Cross Cut



Shank	ISO Shape	200	Shank	ISO Shape	199	200	292	Shank	ISO Shape	277	289
SSW Item Number		GW79-040EFL-4	SSW Item Number		GW261-023EL-4	GW79-040EL-4	GW295-023EL-4	SSW Item Number		GW73-014EUF-4	GW139-023EUF-4
ISO Grit		142	ISO Grit		192	192	192	ISO Grit		110	110
Head Dia		040	Head Dia		023	040	023	Head Dia		014	023
Head Length mm		13	L mm		11.5	13	15	L mm		2.9	8
Color Band			Color Band					Color Band			
Max Speed		30K	Max Speed		40K	30K	40K	Max Speed		40K	40K
Brasseler Number		H79EFL.11.040	Brasseler Number		H261EL.11.023	H79EL.11.040	H295EL.11.023	Brasseler Number		H73EUF.11.014	H139EUF.11.023
Edenta Number		-	Edenta Number		-	-	-	Edenta Number		-	-

DF SERIES™ Precision Metal- Crowns and Bridged - FINISHING PRIOR TO VENEERING
Non-Precious Metal - Crowns and Bridged - FINISHING PRIOR TO VENEERING
Porcelain to Metal Margins - FINE ADJUSTMENTS
Cross Cut



Shank	ISO Shape	141	198	199	200	219	289	292
SSW Item Number		GW129-023DF-4	GW138-023DF-4	GW261-023DF-4	GW79-040DF-4	GW136-016DF-4	GW139-023DF-4	GW295-023DF-4
ISO Grit		141	141	141	141	141	141	141
Head Dia		023	023	023	040	016	023	023
L mm		8	8	11.5	13	8	8	15
Color Band								
Max Speed		40K	40K	40K	30K	40K	40K	40K
Brasseler Number		H129DF.11.023	H138DF.11.023	H261DF.11.023	H79DF.11.040	H136DF.11.016	H139DF.11.023	H295DF.11.023
Edenta Number		-	-	-	-	-	-	-

UM SERIES™ Precious Metal Castings - TRIM, CONTOUR AND FINISH
Chrome Cobalt - ADJUST AND FINISH
Cross Cut

Non-Precious Metal Casting - TRIM, CONTOUR AND FINISH
Partial Denture Framework - TRIM AND CONTOUR

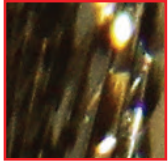


Shank	ISO Shape	141	198	200	200	237	273	275	275	277	289
SSW Item Number		GW129-023UM-4	GW138-023UM-4	GW79-040UM-4	GW351-060UM-4	GW77-023UM-4	GW251-040UM-4	GW250-040UM-4	GW251-060UM-4	GW73-014UM-4	GW139-023UM-4
ISO Grit		145	145	145	145	145	145	145	145	145	145
Head Dia		023	023	040	060	023	040	040	060	014	023
Head Length mm		8	8	13	13	5.5	9	13	14	2.9	8
Color Band											
Max Speed		40K	40K	30K	20K	40K	30K	30K	20K	40K	40K
Brasseler Number		H129UM.11.023	H138UM.11.023	H79UM.11.040	H351UM.11.060	H77UM.11.023	H251UM.11.040	H250UM.11.040	H251UM.11.060	H73UM.11.014	H139UM.11.023
Edenta Number		-	-	-	-	-	-	-	-	-	-

UK SERIES™

Cross Cut

Ceramic Restorations - TRIM AND FINISH
 Composite Restorations - TRIM AND FINISH
 Acrylic Appliances - TRIM AND CONTOUR

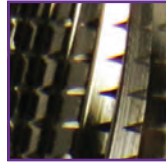


Shank	ISO Shape	198	289
SSW Item Number		GW138-023UK-4	GW139-023UK-4
ISO Grit		144	144
Head Dia		023	023
Head Length mm		8	8
Color Band			
Max Speed		40K	40K
Brasseler Number		H138UK.11.023	H139UK.11.023
Edenta Number		-	-

Q SERIES™

Cross Cut

Acrylic - ADJUST AND CONTOUR
 Titanium - LIGHT TRIMMING
 Plaster - TRIM

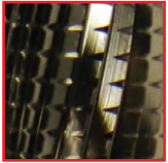


Shank	ISO Shape	200	200	272	275
SSW Item Number		GW79-040Q-4	GW351-060Q-4	GW390-016Q-4	GW251-060Q-4
ISO Grit		176	176	176	176
Head Dia		040	060	016	060
Head Length mm		13	13	3.5	14
Color Band					
Max Speed		30K	20K	40K	20K
Brasseler Number		H79Q.11.040	H351Q.11.060	H390Q.11.016	H251Q.11.060
Edenta Number		-	-	-	-

FSQ SERIES™

Cross Cut

Titanium Implant Abutments - TRIM AND CONTOUR
 Soft Acrylic Denture Reline - TRIM
 Acrylic Appliances - TRIM

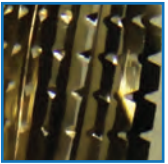


Shank	ISO Shape	141	200	201	275	289
SSW Item Number		GW129-023FSQ-4	GW79-040FSQ-4	GW79-070FSQ-4	GW251-060FSQ-4	GW139-023FSQ-4
ISO Grit		132	132	132	132	132
Head Dia		023	040	070	060	023
Head Length mm		8	13	14	14	8
Color Band						
Max Speed		40K	30K	20K	20K	40K
Brasseler Number		H129FSQ.11.023	H79FSQ.11.040	H79FSQ.11.070	H251FSQ.11.060	H139FSQ.11.023
Edenta Number		1727.023HP	6927.040HP	-	7227.060HP	0827.023HP

GSQ SERIES™

Cross Cut

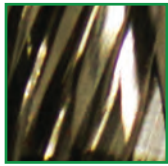
Soft Acrylic or Silicone Denture Reline - TRIM
 Non-Precious Alloy - BULK REDUCTION



Shank	ISO Shape	199	200	200	200	201	275
SSW Item Number		GW261-023GSQ-4	GW79-040GSQ-4	GW351-060GSQ-4	GW351-070GSQ-4	GW79-070GSQ-4	GW251-060GSQ-4
ISO Grit		172	172	172	172	172	172
Head Dia		023	040	060	070	070	060
Head Length mm		11.5	13	13	13	14	14
Color Band							
Max Speed		40K	30K	20K	20K	20K	20K
Brasseler Number		H261GSQ.11.023	H79GSQ.11.040	H351GSQ.11.060	-	H79GSQ.11.070	H251GSQ.11.060
Edenta Number		0175.023HP	-	5275.060HP	6075.070HP	-	7275.060HP
Dedeco Number		6261GSQ-023	-	-	-	-	6251GSQ-060

G SERIES™ Plaster and Stone - TRIM Acrylic - TRIM

Spiral Fluted



Shank	ISO Shape	143	143	200	200	200	200	201	201	237	257
SSW Item Number		GW72-060G-4	GW72-070G-4	GW79-045G-4	GW79-050G-4	GW351-060G-4	GW351-070G-4	GW79-060G-4	GW79-070G-4	GW77-060G-4	GW78-060G-4
ISO Grit		215	215	215	215	215	215	215	215	215	215
Head Dia		060	070	045	050	060	070	060	070	060	060
Head Length mm		13	13	13	13	13	13	14	14	11	12
Color Band											
Max Speed		20K	20K	30K	30K	20K	20K	20K	20K	20K	20K
Brasseler Number		H726.11.060	H726.11.070	-	H796.11.050	H3516.11.060	H3516.11.070	-	H796.11.070	H776.11.060	-
Edenta Number		5880.060HP	-	5680.045HP	-	5280.060HP	-	5580.060HP	-	-	5380.060HP

M SERIES™ Plaster & Stone - TRIM Acrylic - BULK REDUCTION

Spiral Fluted



Shank	ISO Shape	275	Shank	ISO Shape	001	001	001	143	187	199	199	199	200
SSW Item Number		GW251-060G-4	SSW Item Number		GW71-016M-4	GW71-040M-4	GW71-050M-4	GW72-060M-4	GW257-023M-4	GW261-023M-4	GW79-031M-4	GW79-040M-4	
ISO Grit		215	ISO Grit		175	175	175	175	175	175	175	175	
Head Dia		060	Head Dia		016	040	050	060	023	023	031	040	
Head Length mm		14	Head Length mm		1.4	3.5	4.5	13	15	11.5	11.5	13	
Color Band			Color Band										
Max Speed		20K	Max Speed		40K	30K	30K	20K	40K	40K	30K	30K	
Brasseler Number		-	Brasseler Number		H71.11.016	H71.11.040	H71.11.050	H72.11.060	H257.11.023	H261.11.023	-	H79.11.040	
Edenta Number		5480.060HP	Edenta Number		-	7170.040HP	7170.050HP	5870.060HP	-	-	6470.031HP	5770.040HP	



Shank	ISO Shape	200	200	200	200	201	201	201	237	257	257
SSW Item Number		GW79-045M-4	GW79-050M-4	GW351-060M-4	GW351-070M-4	GW257-060RM-4	GW79-060M-4	GW79-070M-4	GW77-060M-4	GW78-023M-4	GW78-060M-4
ISO Grit		175	175	175	175	175	175	175	175	175	175
Head Dia		045	050	060	070	060	060	070	060	023	060
Head Length mm		13	13	13	13	14	14	14	11	6	12
Color Band											
Max Speed		30K	30K	20K	20K	20K	20K	20K	20K	40K	20K
Brasseler Number		-	H79.11.050	H351.11.060	H351.11.070	H257R.11.060	-	H79.11.070	H77.11.060	H78.11.023	H78.11.060
Edenta Number		5670.045HP	-	5270.060HP	-	5970.060HP	5570.060HP	-	5170.060HP	-	5370.060HP



Shank	ISO Shape	275	275	277
SSW Item Number		GW251-060M-4	GW251-070M-4	GW73-060M-4
ISO Grit		175	175	175
Head Dia		060	070	060
Head Length mm		14	14	10
Color Band				
Max Speed		20K	20K	20K
Brasseler Number		251.11.060	H251.11.070	H73.11.060
Edenta Number		5470.060HP	-	6370.060HP

EXPRESS LINE

LAB METAL FINISHING BURS



EXPRESS LINE®
Lab Metal Finishing Bur Kit
#16100

Kit Contains: One each of the following
Express Line Lab Metal Finishing Burs
EL1, EL2, EL3, EL4, EL5, FG7006



EXPRESS LINE

LAB DIAMONDS - STRAIGHT HANDPIECE INSTRUMENTS

- Excellent abrasive capacity & life
- Ideal for shaping and gross reduction
- Works great on PFM, chrome & ceramic materials
- Recommended maximum speed 60,000 RPMs

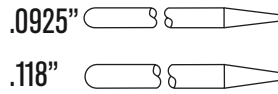
- Overall length 44.5mm
- Grit: Medium
- 5 Pack



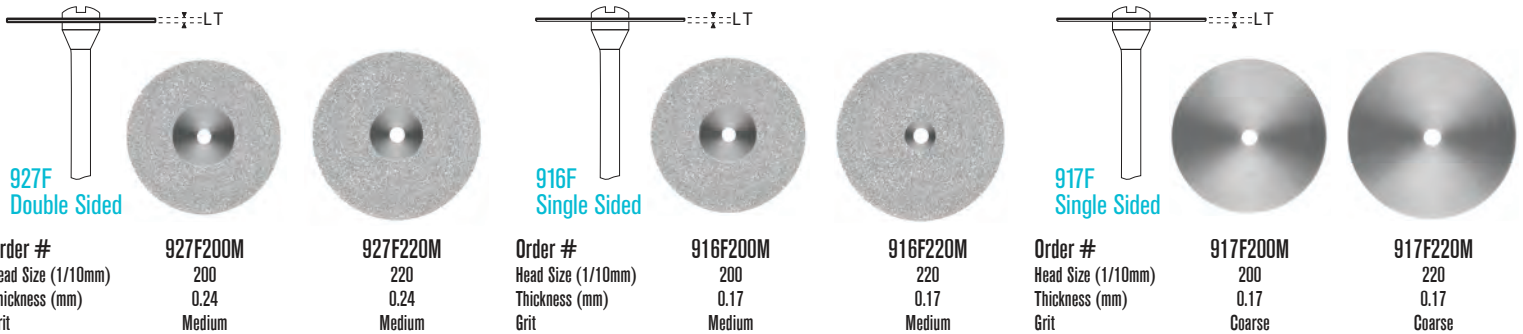
EXPRESS LINE

DIAMOND DISCS

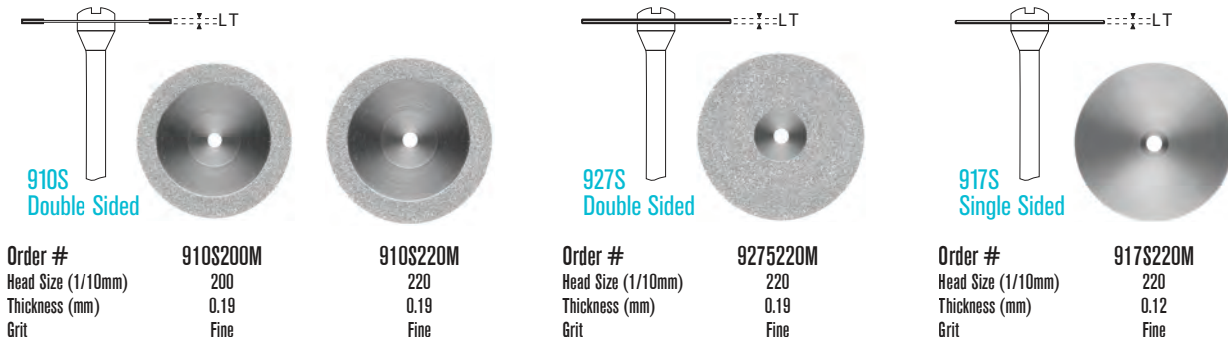
Standard
Straight
Handpiece



FLEX Mounted Diamond Discs



SUPERFLEX Mounted Diamond Discs



FOR PORCELAIN & METAL



- Ceramic bonded grinder with diamond grit for more efficiency and durability.
- Maintains shape during application.
- Heat resistant.



Lab Grinder PM2S
Coarse Large Disc
Item #89133
1 PK



Lab Grinder PM2S
Coarse Taper Cylinder
Item #89134
3 PK



Lab Grinder PM2S
Coarse Straight Cylinder
Item #89135
3 PK



Lab Grinder PM2S
Coarse Small Disc
Item #89136
1 PK



Lab Grinder PM2S
Medium Large Disc
Item #89137
1 PK



Lab Grinder PM2S
Medium Taper Cylinder
Item #89138
3 PK



Lab Grinder PM2S
Medium Straight Cylinder
Item #89139
3 PK



Lab Grinder PM2S
Medium Small Disc
Item #89140
1 PK

FOR ZIRCONIA & LITHIUM DISILICATE - POLISHING



- Specially designed polisher for full contour zirconia restorations.
- Produces glossy surfaces with high diamond concentration for more efficiency.
- Eliminates the need for glazing.



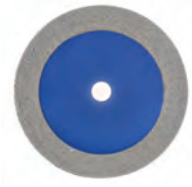
Lab Polisher ZL3S
Coarse Large Disc
Item #89141
1 PK



Lab Polisher ZL3S
Coarse Flame
Item #8914
3 PK



Lab Polisher ZL3S
Coarse Wheel
Item #89143
3 PK



Lab Polisher ZL3S
Coarse Wheel
Unmounted
Item #89144
1 PK



Jazz Lab Polisher ZL3S
Medium Large Disc
Item #89145
1 PK



Jazz Lab Polisher ZL3S
Medium Flame
Item #89146
3 PK



Lab Polisher ZL3S
Medium Wheel
Item #89147
3 PK



Lab Polisher ZL3S
Medium Wheel
Unmounted
Item #89148
1PK



Jazz Lab Polisher ZL3S
Fine Large Disc
Item #89149
1 PK



Lab Polisher ZL3S
Fine Flame
Item #89150
3 PK



Lab Polisher ZL3S
Fine Wheel
Item #89151
3 PK



Lab Polisher ZL3S
Fine Wheel
Unmounted
Item #89152
1 PK

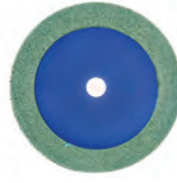
FOR PORCELAIN POLISHING



- Flexible polishing discs for all porcelain materials.
- Diamond grit for highest efficiency.
- Surface corrections without additional glazing.



Lab Polisher P3S
Coarse Large Disc
Item #89153
1 PK



Lab Polisher P3S
Coarse Wheel
Unmounted
Item #89154
1 PK



Lab Polisher P3S
Coarse Flame
Item #89155
3 PK



Lab Polisher P3S
Coarse Small Wheel
Item #89156
3 PK



Lab Polisher P3S
Medium Large Disc
Item #89157
1 PK



Lab Polisher P3S
Medium Wheel
Unmounted
Item #89158
1 PK



Lab Polisher P3S
Medium Flame
Item #89159
3 PK



Lab Polisher P3S
Medium Small Wheel
Item #89160
3 PK



Lab Polisher P3S
Fine Large Disc
Item #89161
1 PK



Lab Polisher P3S
Fine Wheel
Unmounted
Item #89162
1 PK



Lab Polisher P3S
Fine Flame
Item #89163
3 PK



Lab Polisher P3S
Fine Small Wheel
Item #89164
3 PK



Jazz Precision Mandrel
#89168
5 PK

ROUND



	GW2R	GWSL2R	GW4R	GWSL4R	GW6R	GWSL6R	GW8R
10 PK	18202	18203-5	18204	18205-5	18206	18207-5	18208
100 PK	13086	5-PACK	13087	5-PACK	13088	5-PACK	

PEAR



GW2P	GW330	GW330S
18209	18210	18211
	13090	

INVERTED CONE



GW34	GW35	GW37
18214	18215	18216

STRAIGHT FISSURE



	GWH340	GWH342	GWH342L	GW1557	GWSL1557
10 PK	14918	14919	14920	18221	18225-5
100 PK				13092	5-PACK

STRAIGHT FLAT END FISSURE



GW556	GW557	GW557S	GWSL557	GW558	GWSL558
18217	18218	18219	18220-5	18222	18226-5
	13091		5-PACK		5 PACK

TAPER FLAT END FISSURE



GW701	GW702
18223	18224

PREPARATION



GW245
10 PK 18212
100 PK 13089

RESTORATION REMOVAL



GW-1	GW-2	GW1S	GW2S
15061	15062	15063	15064
13093	13095	13094	13096



ROUND END TAPER



GWZ 856-018
ITEM# 18161

ROUND



GWZ 801-014	GWZ 801-018
ITEM# 18162	ITEM# 18163

FOOTBALL



GWZ 379-023
ITEM# 18164

STERILE R AVAILABLE IN ROLLS OF 25

FOOTBALL



GWU 379-023
18193-5
10909

SHORT FLAT END TAPER



GWU 845KR-016	GWU 845KR-018	GWU 845KR-025
18195-5	18196-5	18197-5
-	-	-
4.0	4.0	4.0
1.6	1.8	2.5

FLAT END TAPER



GWU 847-016	GWU 847-018	GWU 847-020
18200-5	18191-5	18192-5
-	10840	-
8.0	8.0	8.0
1.6	1.8	2.0

FLAT END TAPER SHORT SHANK



GWU 847-016S	GWU 847-018S	GWU 847-020S
18186-5	18187-5	18185-5
-	-	-
8.0	8.0	8.0
1.6	1.8	2.0

ROUND END TAPER



GWU 855-025	GWU 856-016	GWU 856-018	GWU 856-020	GWU856-023
18194-5	18198-5	18188-5	18189-5	18194-5
-	-	10715	10716	-
7.0	8.0	8.0	8.0	8.0
2.5	1.6	1.8	2.0	2.5

ROUND END TAPER SHORT SHANK



GWU 856-016S	GWU 856-018S	GWU 856-020S
18182-5	18196-5	18184-5
10137	-	-
8.0	4.0	8.0
1.6	1.8	2.0

DEPTH CUTTER



GWDC1	GWDC2
15040	15041
10933	10138

TOP SELLING LAB BURS

E SERIES™ Cross Cut



Shank	ISO Shape	001	001	110	123	143	187	198	198	199	200
SSW Item Number		GW71-023E-4	GW71-050E-4	GW296-040E-4	GW364-023E-4	GW72-060E-4	GW257-023E-4	GW351-040E-4	GW138-023E-4	GW261-023E-4	GW79-040E-4
ISO Grit		190	190	190	190	190	190	190	190	190	190
Head Dia		023	050	040	023	060	023	040	023	023	040
Head Length mm		2.1	4.5	6	15	13	15	8	8	11.5	13
Color Band											
Max Speed		40K	30K	30K	40K	20K	40K	30K	40K	40K	30K

Shank	ISO Shape	200	200	201	201	225	237	237	237	237	273
SSW Item Number		GW79-050E-4	GW351-060E-4	GW257-060E-4	GW79-060E-4	GW137-023E-4	GW77-023E-4	GW77-029E-4	GW77-040E-4	GW77-060E-4	GW251-040E-4
ISO Grit		190	190	190	190	190	190	190	190	190	190
Head Dia		050	060	060	060	023	023	029	040	060	040
Head Length mm		13	13	14	14	5.5	5.5	5.5	9	11	9
Color Band											
Max Speed		30K	20K	20K	20K	40K	40K	40K	30K	20K	30K

EF SERIES™ Cross Cut



Shank	ISO Shape	275	275	277	277	277	289	292	141	187	187
SSW Item Number		GW251-060E-4	GW251-070E-4	GW73-023E-4	GW73-040E-4	GW73-060E-4	GW139-023E-4	GW295-023E-4	GW129-023EF-4	GW257-023EF-4	GW257-060EF-4
ISO Grit		190	190	190	190	190	190	190	140	140	140
Head Dia		060	070	023	040	060	023	023	023	023	060
Head Length mm		14	14	3.8	6	10	8	15	8	15	14
Color Band											
Max Speed		20K	20K	40K	30K	20K	40K	40K	40K	40K	20K

Shank	ISO Shape	198	200	200	201	237	237	275	277	289	292
SSW Item Number		GW138-023EF-4	GW79-040EF-4	GW351-060EF-4	GW79-060EF-4	GW77-023EF-4	GW77-029EF-4	GW251-060EF-4	GW73-023EF-4	GW139-023EF-4	GW295-023EF-4
ISO Grit		140	140	140	140	140	140	140	140	140	140
Head Dia		023	040	060	060	023	029	060	023	023	023
Head Length mm		8	13	13	14	5.5	5.5	14	3.8	8	15
Color Band											
Max Speed		40K	40K	40K	20K	40K	40K	20K	40K	40K	40K

FSQ SERIES™ Cross Cut



Shank	ISO Shape	141	200	275	200	275	199	200	200	201	275
SSW Item Number		GW129-023FSQ-4	GW79-040FSQ-4	GW251-060FSQ-4	GW351-060GE-4	GW251-060GE-4	GW261-023GSQ-4	GW79-040GSQ-4	GW351-060GSQ-4	GW79-070GSQ-4	GW251-060GSQ-4
ISO Grit		132	132	132	220	220	172	172	172	172	172
Head Dia		023	040	060	060	060	023	040	060	070	060
Head Length mm		8	14	14	13	14	11.5	13	13	14	14
Color Band											
Max Speed		40K	30K	20K	20K	20K	40K	30K	20K	20K	20K

GE SERIES™ Cross Cut



GSQ SERIES™ Cross Cut



Great White® Lab Series Brochure - Rev 5.



800.535.2877 | www.sswhitedental.com
1145 Towbin Avenue Lakewood, New Jersey 08701